

Bonding Protocol Rebonding: Incognito™ Clear Precision Tray

+ RelyX™ Unicem 2 Automix Self-Adhesive Resin Cement

Checklist

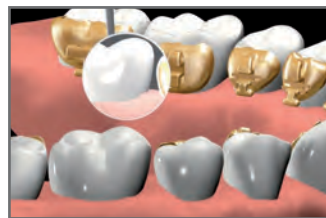
- 1 Ortholux™ Luminous Curing Light
- 2 Scalpel
- 3 Unitek™ Etching Gel
- 4 Dental Mirror
- 5 Articulation Paper
- 6 Scaler
- 7 Cotton Rolls and Dental Floss
- 8 Ball burr
- 9 Acetone 100%
- 10 Debonded Bracket
- 11 Brushes
- 12 RelyX™ Unicem 2 Automix Self-Adhesive Resin Cement
- 13 Sandblasting Device to clean bracket surface
- 14 Tweezer
- 15 Screenshots
- 16 Empty Clear Precision Tray



Please store and use RelyX™ Unicem 2 Automix Self-Adhesive Resin Cement at room temperature



01
Prepare the surface of the tooth. Remove all residual bonding agent using a tungsten carbide finishing burr.



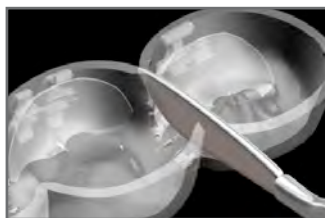
02
Check visually ...



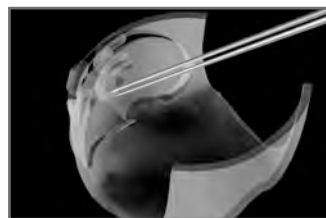
03
... and with probing to ensure that all bonding residue has been removed.



04
Separate the inner soft layer of the bonding tray from the rigid outer layer.



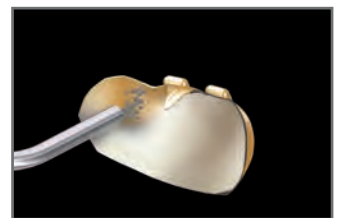
05
To prepare the repositioning jig, identify the correct tooth cavity in the silicone tray and cut along the interproximal areas mesial and distal of this tooth.



06
Check for, and remove, any loose silicone residue in the bracket cavity.





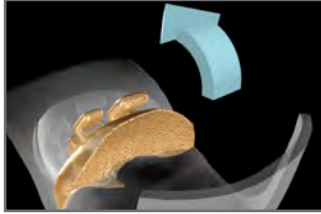
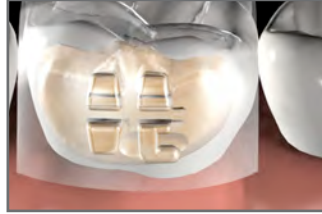






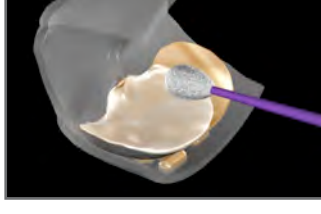

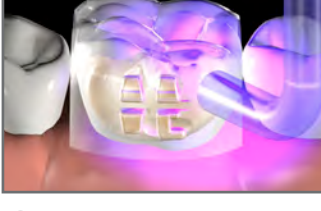
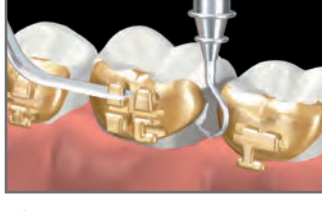
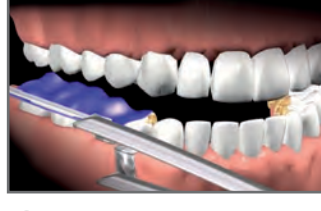
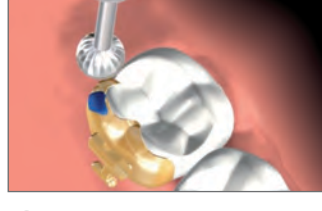
07
Without the bracket inserted, place the repositioning jig on the tooth and verify the fit.



08
Vertically sandblast the base of the bracket. Completely remove any remaining bonding material and roughen the metal surface.

Bonding Protocol Rebonding: Incognito™ Clear Precision Tray

+ RelyX™ Unicem 2 Automix Self-Adhesive Resin Cement

 <p>09</p> <p>Sandblasted bracket base</p>	 <p>10</p> <p>Check bracket fit to ensure that surfaces are smooth and the bracket is correctly positioned in the mouth.</p>	 <p>11</p> <p>Insert the sandblasted bracket into the repositioning jig.</p>	 <p>12</p> <p>With the bracket inserted, place the repositioning jig on the tooth and verify the fit again.</p>
 <p>13</p> <p>Clean the bracket base with 100% acetone using a cotton pellet.</p>	 <p>14</p> <p>Apply Etching Gel (35% phosphoric acid) and etch for 30 seconds. Refer to screenshot for position, if needed.</p>	 <p>15</p> <p>Remove etchant with suction.</p>	 <p>16</p> <p>Rinse with water.</p>
 <p>17</p> <p>Carefully dry using oil- and moisture-free air and recheck the surface of the tooth.</p>	 <p>18</p> <p>RelyX™ Unicem 2 Automix Cement is a dual cure self-adhesive resin cement. The mixing tip facilitates dosing and mixing. Do not cross-contaminate the outlets of the syringe. Please observe the working time of 2 min 30 sec.</p>	 <p>19</p> <p>Using the mixing tip or a micro-brush, apply a thin, even layer of bonding material directly to the bracket base in the repositioning jig. Control the amount of bonding material used. Too small amounts may result in gaps under the bracket base. Too large amounts will create excessive flash.</p>	 <p>20</p> <p>Seat the repositioning jig with the bracket inserted.</p>
 <p>21</p> <p>Hold the light guide as close as possible, curing for 3 seconds (total 12 sec. cure) on all four sides of the bracket using the Ortholux™ Luminous Curing Light. *</p>	 <p>22</p> <p>Remove the repositioning jig and carefully remove any excess bonding material using a scaler or a slow speed finishing burr if necessary.</p>	 <p>23</p> <p>Check occlusion.</p>	 <p>24</p> <p>Any premature contacts with the bracket base in the lateral tooth area must be removed with the ball burr.</p>

* Curing time depends on power of your curing light. With less power, the required curing time increases. Refer to manufacturer's instructions.